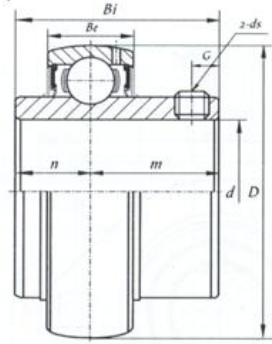


Ball Bearing Inserts (With Setscrews)



SR type seal



TRL type seal

UCX00 (Medium duty)

Bearing No.	d		D	Bi	Be	n	m	G	ds
	(mm)	(in.)							
UCX05-14	22.225	7/8	62	38.1	19	15.9	22.2	6	1/4-28UNF
UCX05	25		62	38.1	19	15.9	22.2	6	M6x1.0
UCX05-16	25.4	1	62	38.1	19	15.9	22.2	6	1/4-28UNF
UCX06	30		72	42.9	20	17.5	25.4	6.5	M8x1.0
UCX06-19	30.163	1 3/16	72	42.9	20	17.5	25.4	6.5	5/16-24UNF
UCX06-20	31.75	1 1/4	72	42.9	20	17.5	25.4	6.5	5/16-24UNF
UCX07-20	31.75	1 1/4	80	49.2	21	19	30.2	8	5/16-24UNF
UCX07-22	34.925	1 3/8	80	49.2	21	19	30.2	8	5/16-24UNF
UCX07	35		80	49.2	21	19	30.2	8	M8x1.0
UCX07-23	36.513	1 7/16	80	49.2	21	19	30.2	8	5/16-24UNF
UCX08-24	38.1	1 1/2	85	49.2	22	19	30.2	8	5/16-24UNF
UCX08	40		85	49.2	22	19	30.2	8	M8x1.0
UCX09-27	42.863	1 11/16	90	51.6	24	19	32.6	10	3/8-24UNF
UCX09-28	44.45	1 3/4	90	51.6	24	19	32.6	10	3/8-24UNF
UCX09	45		90	51.6	24	19	32.6	10	M10x1.25
UCX10-31	49.213	1 15/16	100	55.6	25	22.2	33.4	10	3/8-24UNF
UCX10	50		100	55.6	25	22.2	33.4	10	M10x1.25
UCX10-32	50.8	2	100	55.6	25	22.2	33.4	10	3/8-24UNF
UCX11-32	50.8	2	110	65.1	27	25.4	39.7	10	3/8-24UNF
UCX11	55		110	65.1	27	25.4	39.7	10	M10x1.25
UCX11-35	55.563	2 3/16	110	65.1	27	25.4	39.7	10	3/8-24UNF
UCX11-36			110	65.1	27	25.4	39.7	10	3/8-24UNF
UCX12-36	57.15	2 1/4	120	65.1	28	25.4	39.7	10	3/8-24UNF
UCX12	60		120	65.1	28	25.4	39.7	10	M10x1.25
UCX12-38	60.325	2 3/8	120	65.1	28	25.4	39.7	10	3/8-24UNF
UCX12-39	61.913	2 7/16	120	65.1	28	25.4	39.7	10	3/8-24UNF
UCX13-40	63.5	2 1/2	125	74.6	30	30.2	44.4	12	7/16-20UNF
UCX13	65		125	74.6	30	30.2	44.4	12	M12x1.5
UCX14-44	69.85	2 3/4	130	77.8	30	33.3	44.5	12	7/16-20UNF
UCX14	70		130	77.8	30	33.3	44.5	12	M12x1.5
UCX15-47	74.613	2 15/16	140	82.6	33	33.3	49.3	14	7/16-20UNF
UCX15	75		140	82.6	33	33.3	49.3	14	M12x1.5

UCX15-48	76.2	3	140	82.6	33	33.3	49.3	14	7/16-20UNF
UCX16-50	79.375	3 1/8	150	85.7	35	34.1	51.6	14	7/16-20UNF
UCX16	80		150	85.7	35	34.1	51.6	14	M12x1.5
UCX17-52	82.55	3 1/4	160	96	37	39.7	56.3	15	1/2-20UNF
UCX17	85		160	96	37	39.7	56.3	15	M12x1.5
UCX18-56	88.9	3 1/2	170	104	39	42.9	61.1	16	1/2-20UNF
UCX18	90		170	104	39	42.9	61.1	16	M14x1.5
UCX20	100		190	117.5	44	49.2	68.3	18	M16x1.5
UCX20-64	101.6	4	190	117.5	44	49.2	68.3	18	5/8-18UNF